

www.eBibleProductions.com



**Produced and Edited by Ray and Ruth
Hamilton P.O. Box 513 Caldwell Id.
83606**

A close-up photograph of a cluster of purple flowers, likely azaleas, with prominent stamens. The flowers are in various stages of bloom, showing the delicate structure of the petals and the intricate details of the reproductive parts. The background is a dark, out-of-focus green, suggesting foliage.

email raybse@cableone.net



Copyright (c) 2004





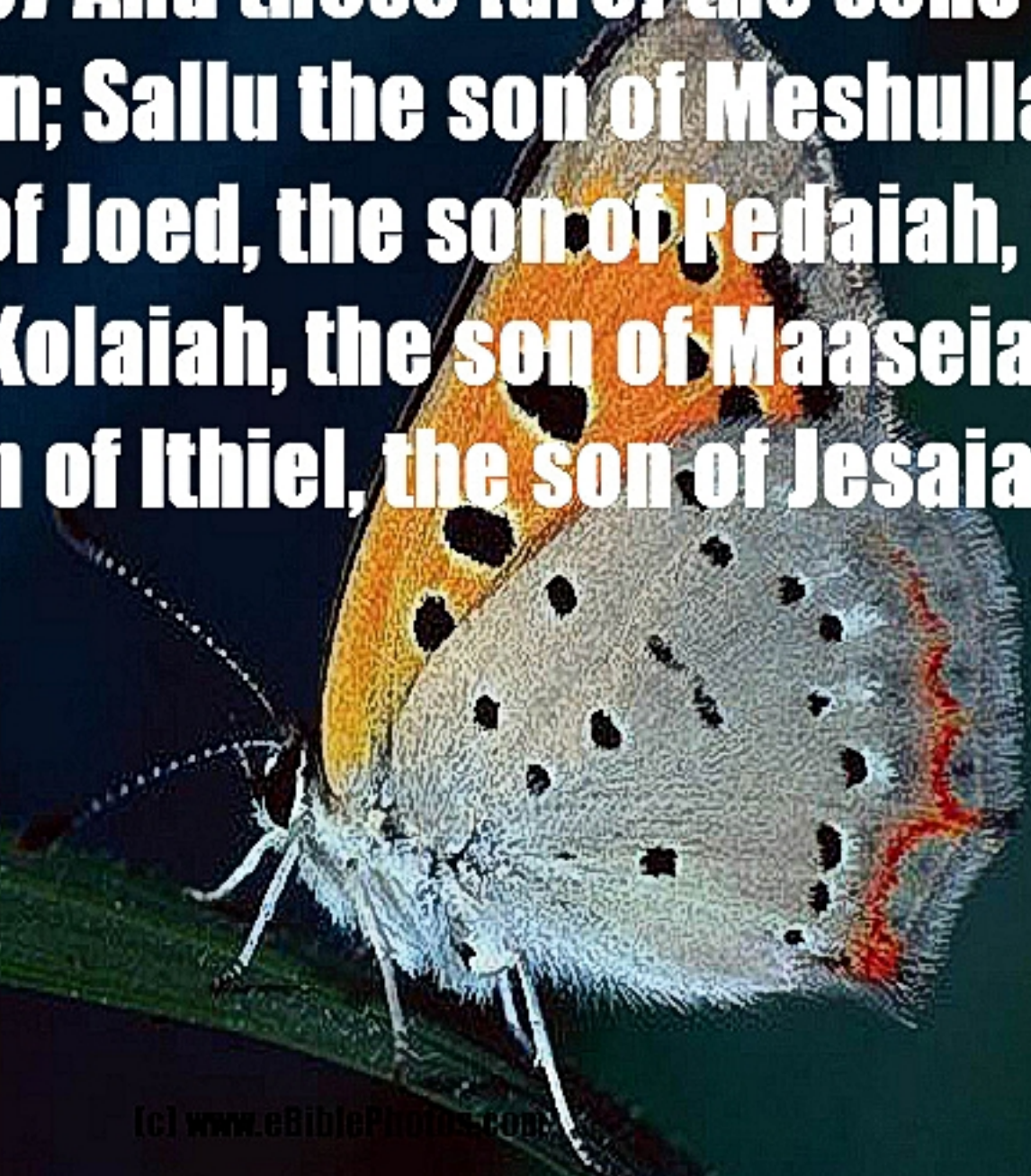
**Recordings by Willard Waggoner (c) 1996 Praise Inc.
P. O. Box 1377 Caldwell Idaho 83606-1377 www.praiseinc.org**

Word Study for --- SALLU



**1Ch 09:07 And of the sons of Benjamin;
Sallu the son of Meshullam, the son of
Hodaviah, the son of Hasenuah,**

Neh 11:07 And these [are] the sons of Benjamin; Sallu the son of Meshullam, the son of Joed, the son of Pedaiah, the son of Kolaiah, the son of Maaseiah, the son of Ithiel, the son of Jesaiah.



**Neh 12:07 Sallu, Amok, Hilkiah, Jedaiah.
These [were] the chief of the priests
and of their brethren in the days of
Jeshua.**