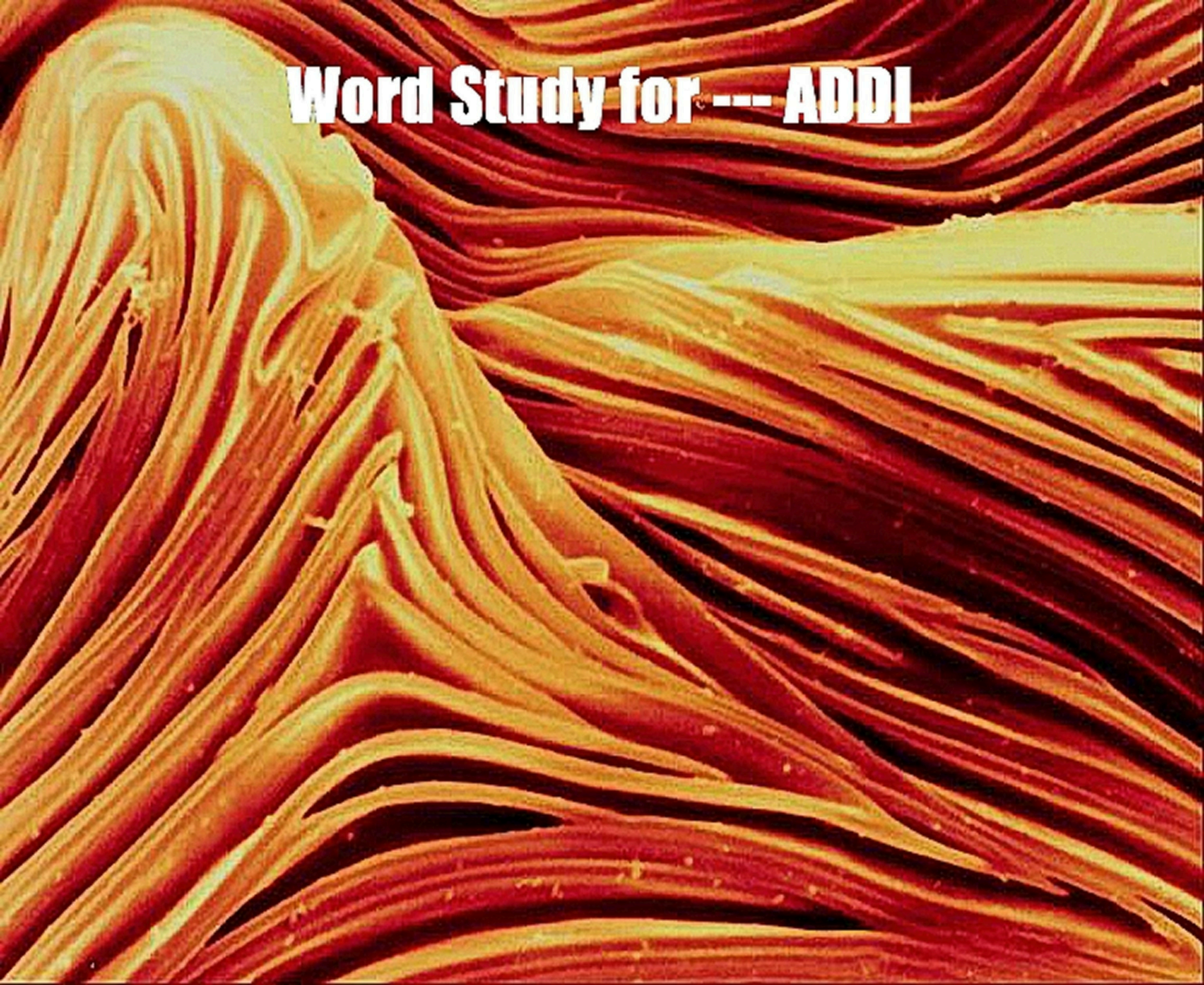



Word Study for --- ADDI



A vibrant bouquet of flowers. In the foreground, a large, multi-petaled rose with pink and yellow hues is prominent. To its right, there are several bright yellow flowers. Above the rose, there are clusters of small, round red berries on green stems. In the background, there are purple flowers and more green foliage. The overall scene is colorful and detailed.

Luke 03:28 Which was the son of
Melchi, which was the son of Addi,
which was the son of Cosam,
which was the son of Elmodam,
which was the son of Er,