

www.eBibleProductions.com



**Produced and Edited by Ray and Ruth
Hamilton P.O. Box 513 Caldwell Id.
83606**

A close-up photograph of a cluster of purple flowers, likely azaleas, with prominent stamens. The flowers are in various stages of bloom, showing delicate petals and long, thin stamens with yellowish tips. The background is a dark, out-of-focus green, suggesting foliage.

email raybse@cableone.net



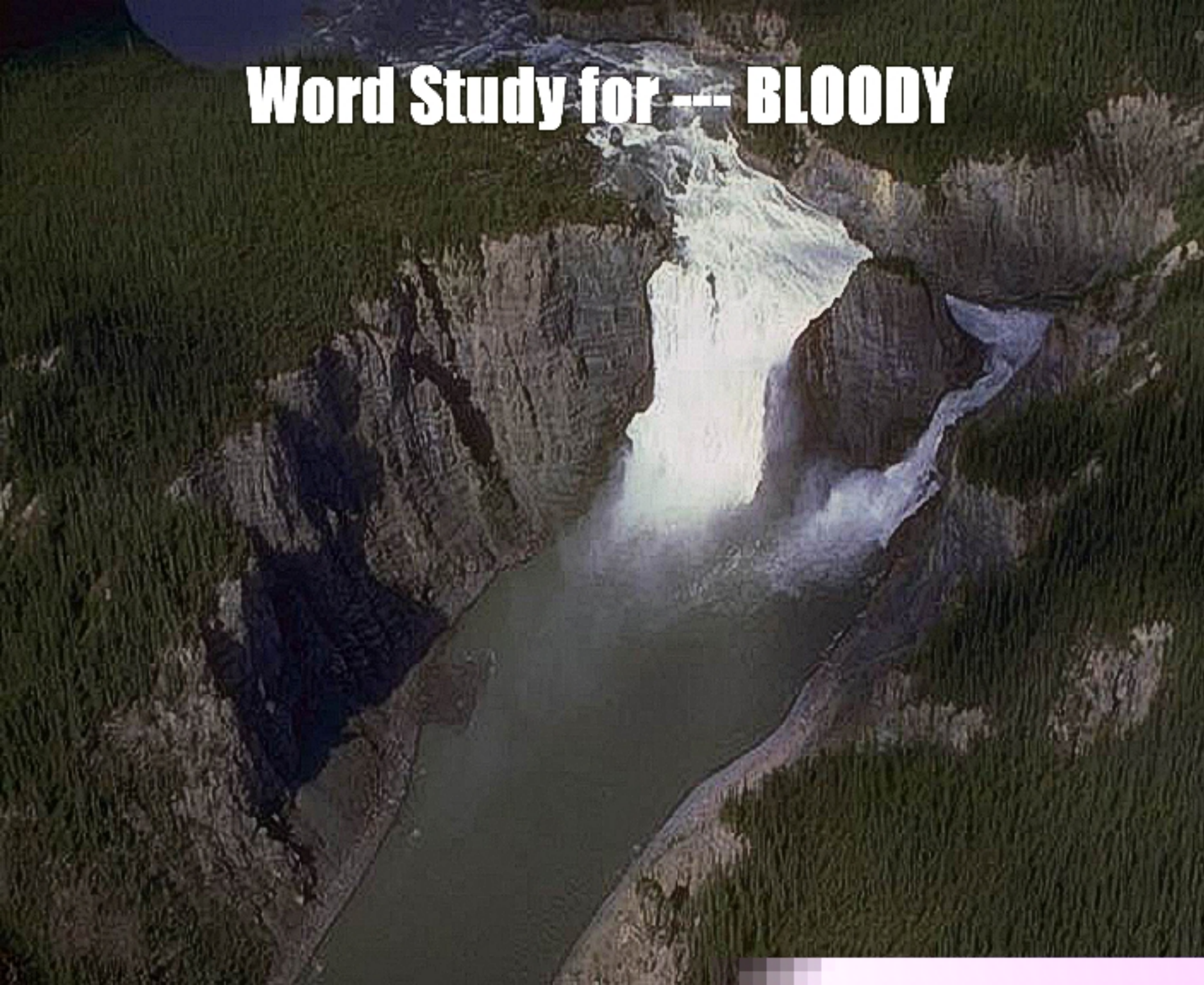
Copyright (c) 2004





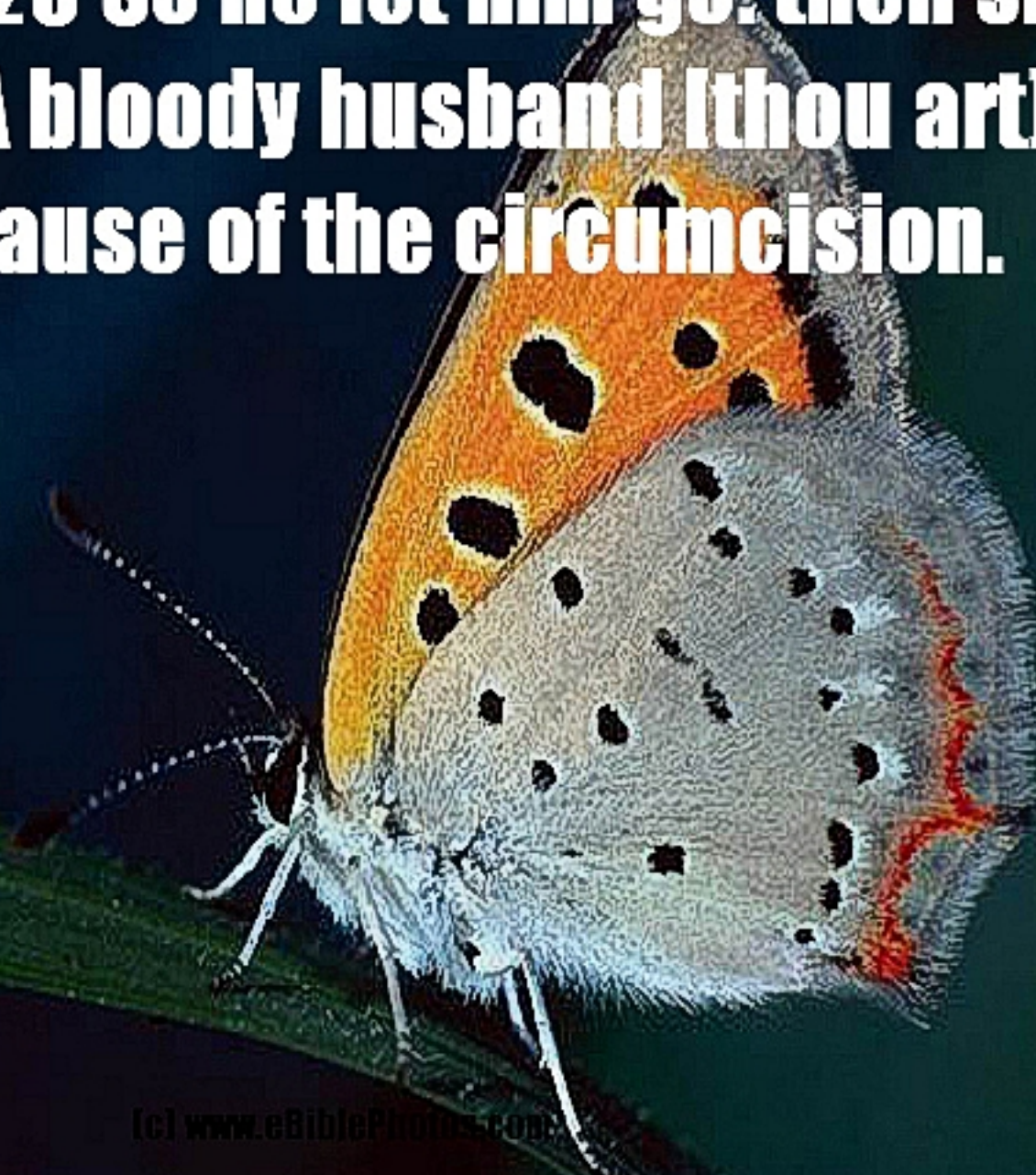
**Recordings by Willard Waggoner (c) 1996 Praise Inc.
P. O. Box 1377 Caldwell Idaho 83606-1377 www.praiseinc.org**

Word Study for --- BLOODY



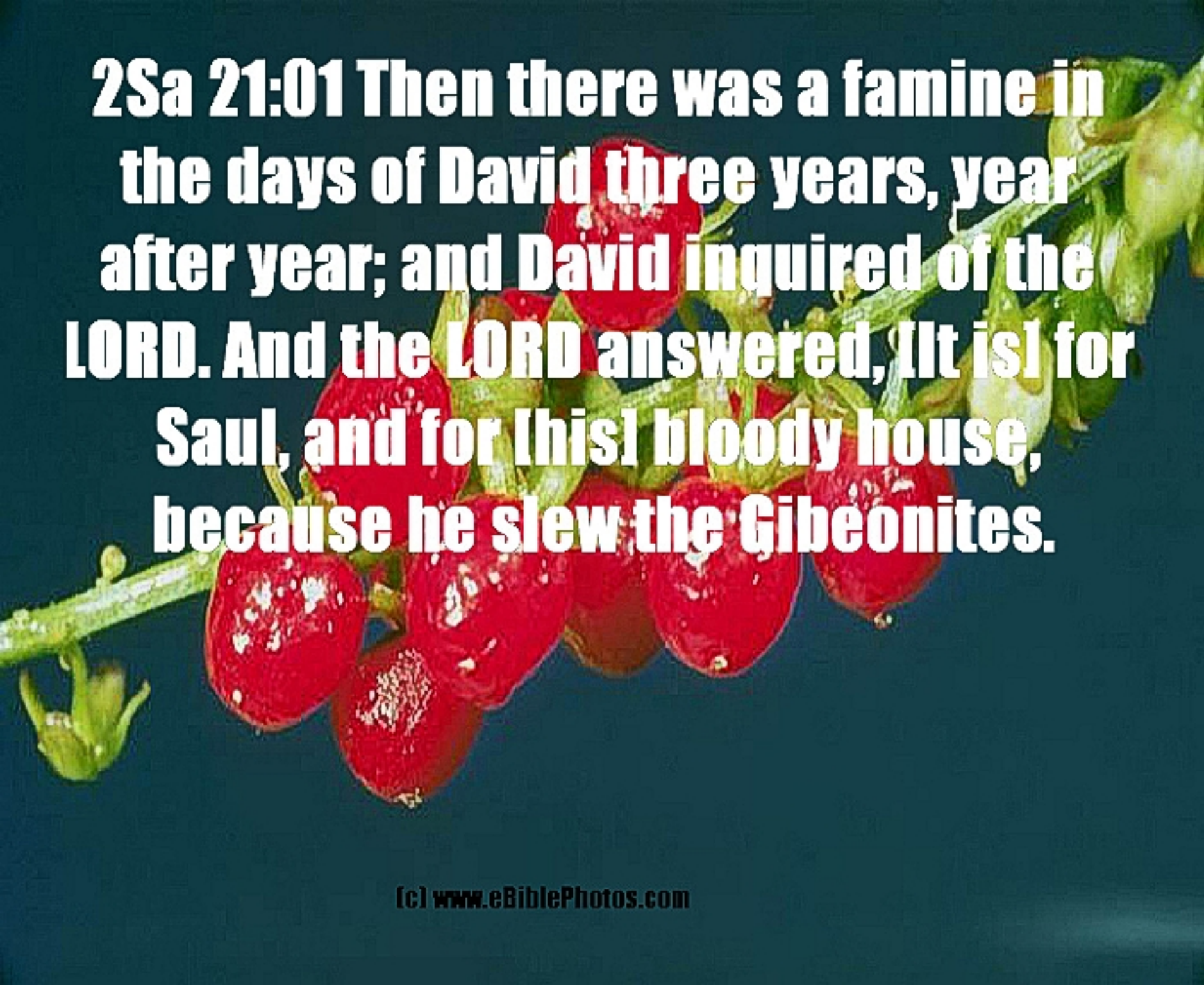
Exo 04:25 Then Zipporah took a sharp stone, and cut off the foreskin of her son, and cast it at his feet, and said, Surely a bloody husband art thou to me.

**Exo 04:26 So he let him go: then she
said, A bloody husband (thou art),
because of the circumcision.**




**2Sa 16:07 And thus said Shimei when
he cursed, Come out, come out, thou
bloody man, and thou man of Belial:**

2Sa 16:08 The LORD hath returned upon thee all the blood of the house of Saul, in whose stead thou hast reigned; and the LORD hath delivered the kingdom into the hand of Absalom thy son: and, behold, thou art taken in thy mischief, because thou art a bloody man.

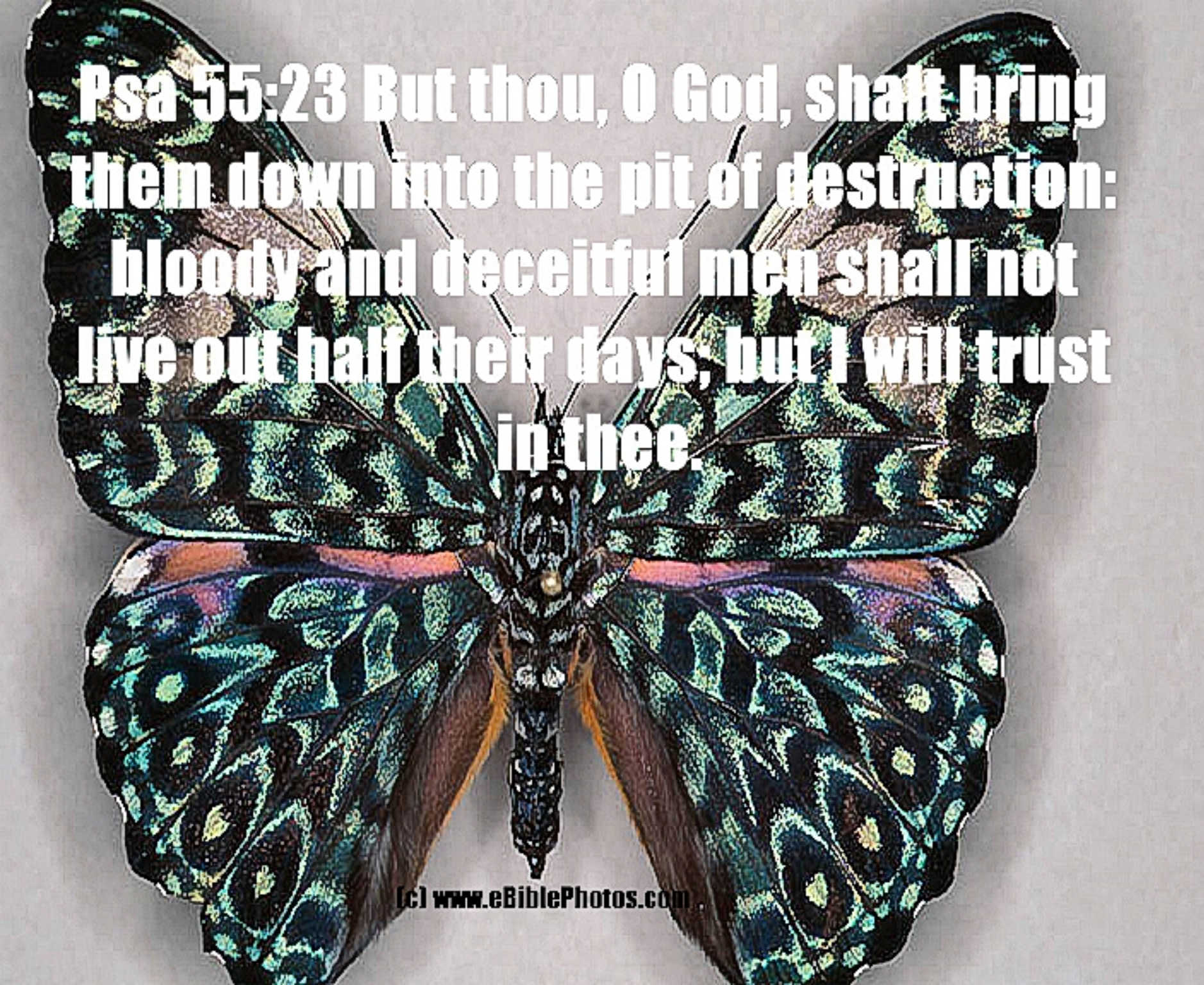


2Sa 21:01 Then there was a famine in the days of David three years, year after year; and David inquired of the LORD. And the LORD answered, [It is] for Saul, and for [his] bloody house, because he slew the Gibeonites.

An aerial photograph of a rugged, hilly landscape. The terrain is covered in a mix of green and brown vegetation, suggesting a semi-arid or high-altitude environment. The hills are interconnected by narrow paths or small streams. The overall scene is one of natural beauty and complexity.

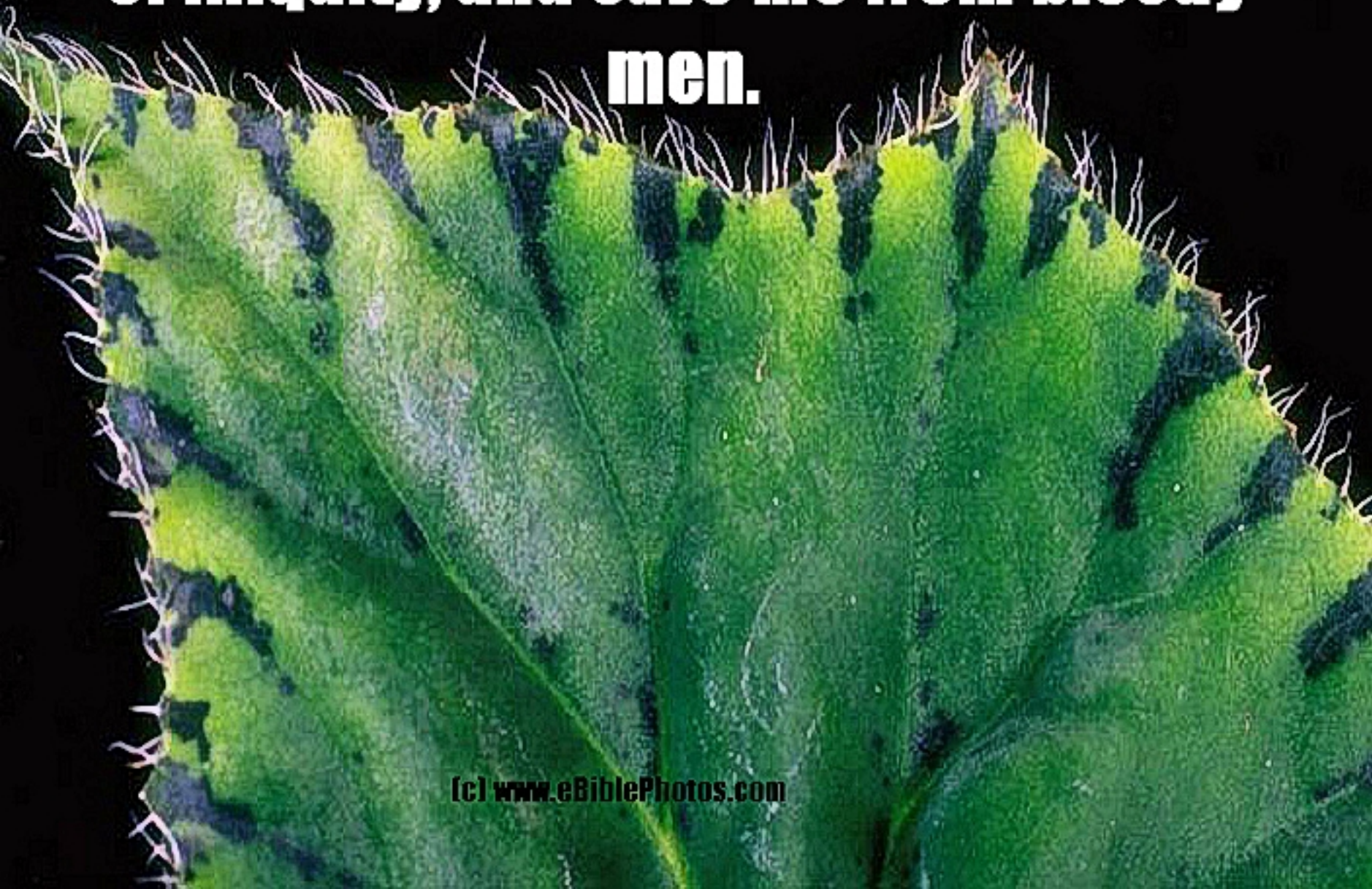
**Psa 05:06 Thou shalt destroy them
that speak leasing: the LORD will
abhor the bloody and deceitful man.**

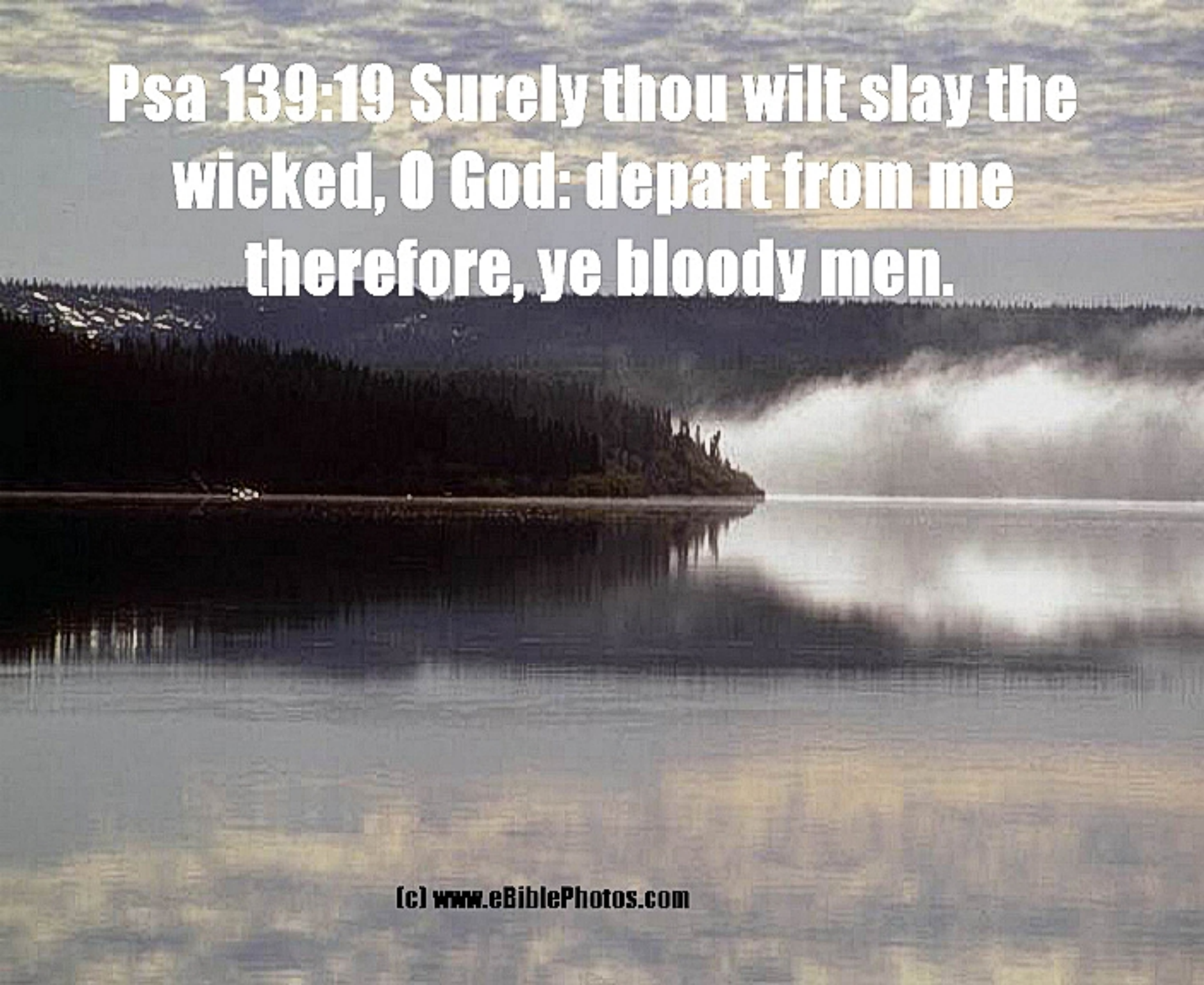
**Psa 26:09 Gather not my soul with
sinners, nor my life with bloody men:**



**Psa 55:23 But thou, O God, shalt bring
them down into the pit of destruction:
bloody and deceitful men shall not
live out half their days; but I will trust
in thee.**

**Psa 59:02 Deliver me from the workers
of iniquity, and save me from bloody
men.**



A scenic landscape featuring a calm lake in the foreground, a dense forest of evergreen trees along the shoreline, and rolling mountains in the background under a cloudy sky. The water reflects the sky and the surrounding landscape. The text is overlaid in the upper portion of the image.

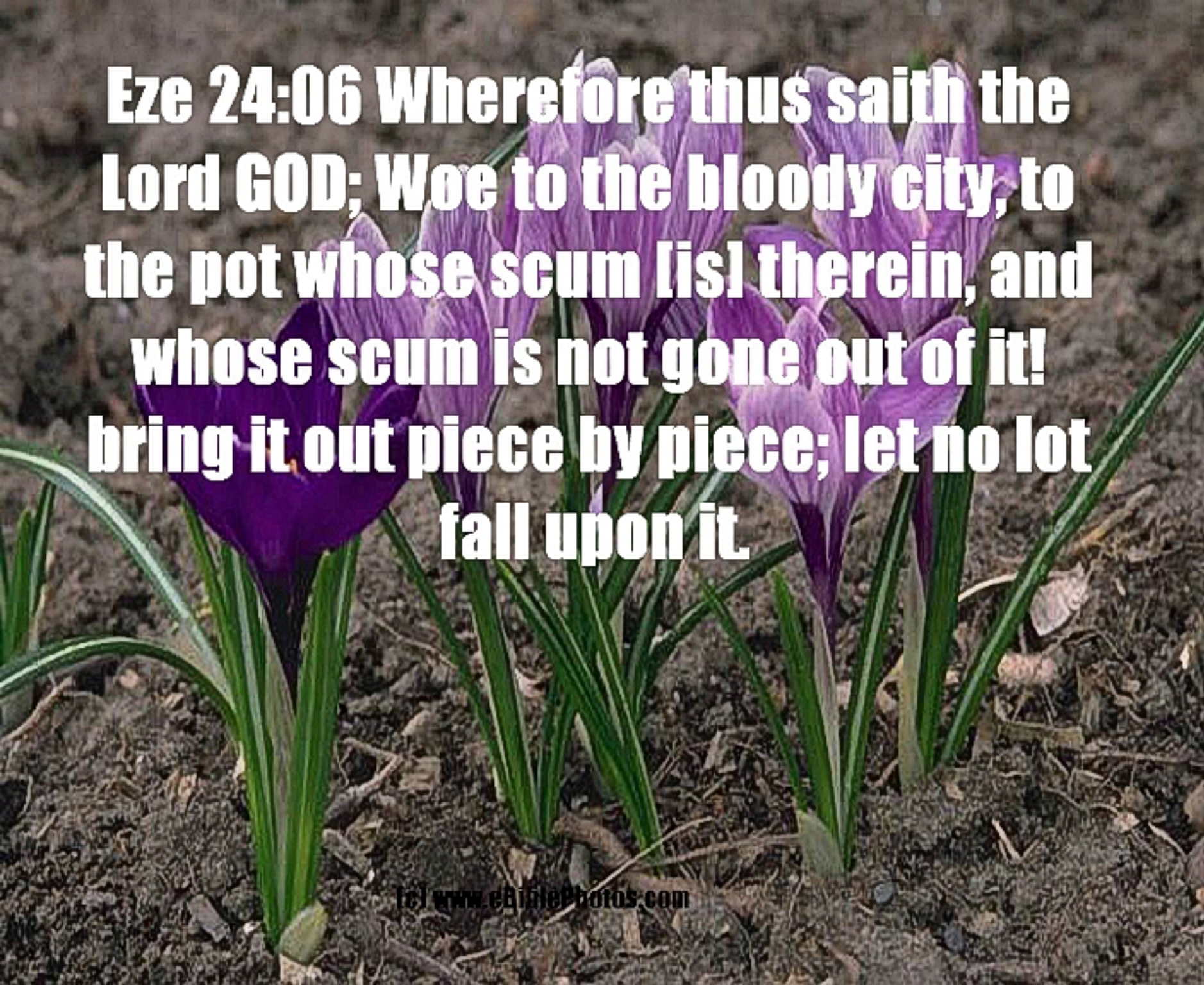
**Psa 139:19 Surely thou wilt slay the
wicked, O God: depart from me
therefore, ye bloody men.**

**Eze 07:23 Make a chain: for the land is
full of bloody crimes, and the city is
full of violence.**



A vibrant field of tulips in various colors including red, yellow, and blue, with a white text overlay.

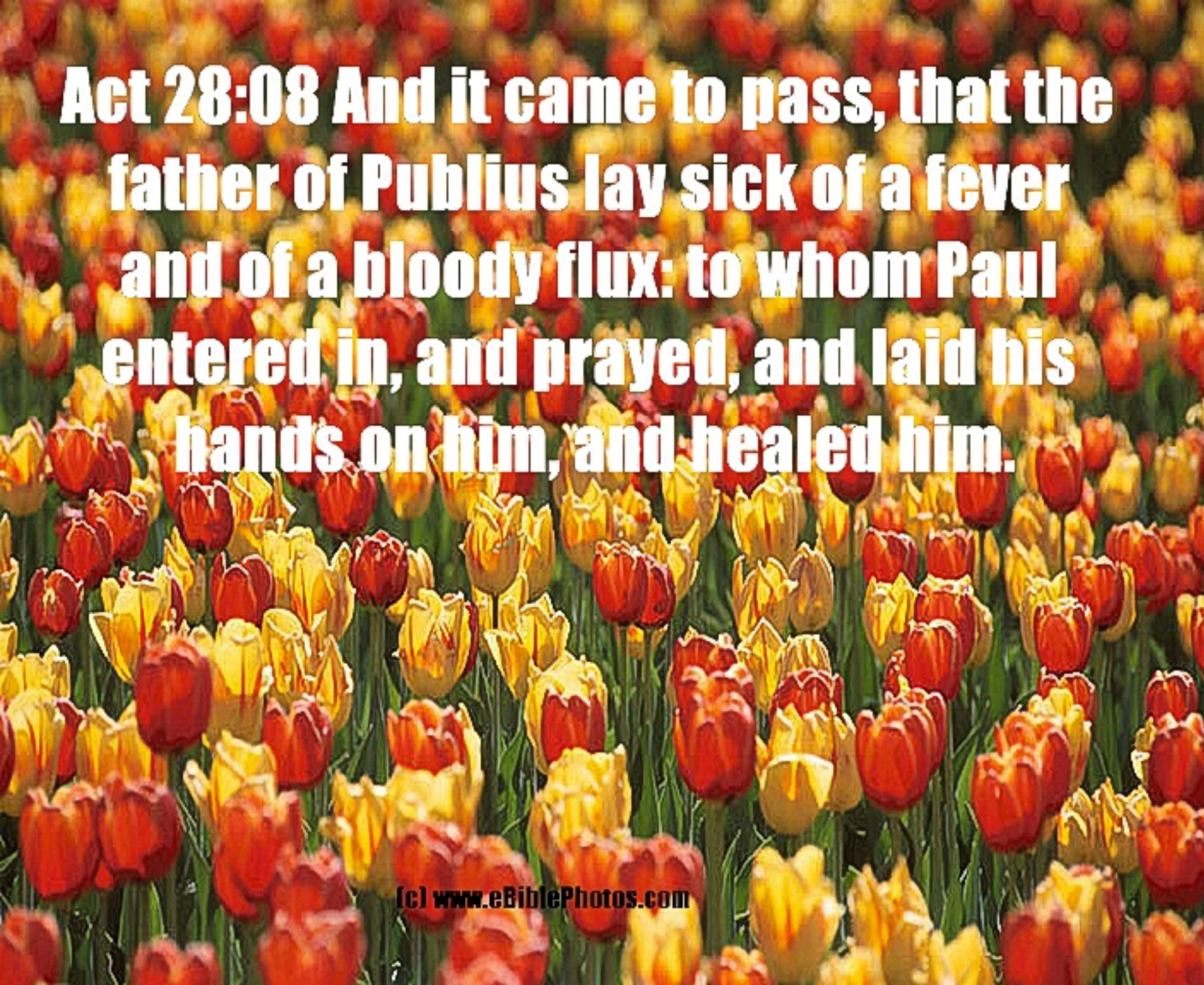
Eze 22:02 Now, thou son of man, wilt thou judge, wilt thou judge the bloody city? yea, thou shalt show her all her abominations.

A photograph of several purple crocus flowers in full bloom, growing from dark soil. The flowers have six petals and are surrounded by green, sword-shaped leaves. The background is a soft-focus view of the garden ground.

**Eze 24:06 Wherefore thus saith the
Lord GOD; Woe to the bloody city, to
the pot whose scum [is] therein, and
whose scum is not gone out of it!
bring it out piece by piece; let no lot
fall upon it.**

**Eze 24:09 Therefore thus saith the
Lord GOD; Woe to the bloody city! I will
even make the pile for fire great.**

**Nah 03:01 Woe to the bloody city! it is
all full of lies and robbery; the prey
departeth not;**

A vibrant field of tulips in shades of red and yellow, filling the background of the image. The flowers are in various stages of bloom, creating a dense and colorful texture.

Act 28:08 And it came to pass, that the father of Publius lay sick of a fever and of a bloody flux: to whom Paul entered in, and prayed, and laid his hands on him, and healed him.